



## Company Profile



An ISO/TS 16949:2009 Company



1993

2016



spearheading  
spearheading a leading

Galaxy Bearings Ltd. initiated its business in 1990 and proudly boasts on being the first public limited company of Adico – Galaxy Group. Commencing its production of taper & cylindrical bearings in the year 1993. So far we have developed a variety of 450 plus bearings to cater the automotive-OEM, industrial, defence, state transport and after market segments in the range of 25mm to 150mm bore. We manufacture upto 3.5 million bearings per annum under stringent quality norms adhering to the ISO/TS 16949:2009 standards.

With challenges beckoning, we have responded with path-breaking boldness. We have embarked upon the transformational “Lean Journey” to operational excellence.

At Galaxy Bearings Ltd. we ensure the impact to the operational efficiency in a big way by squeezing out waste, optimizing productivity by continual improvement, re-aligning operations with business strategy, effectively discovering the Customer Voice and rapidly developing products and services.

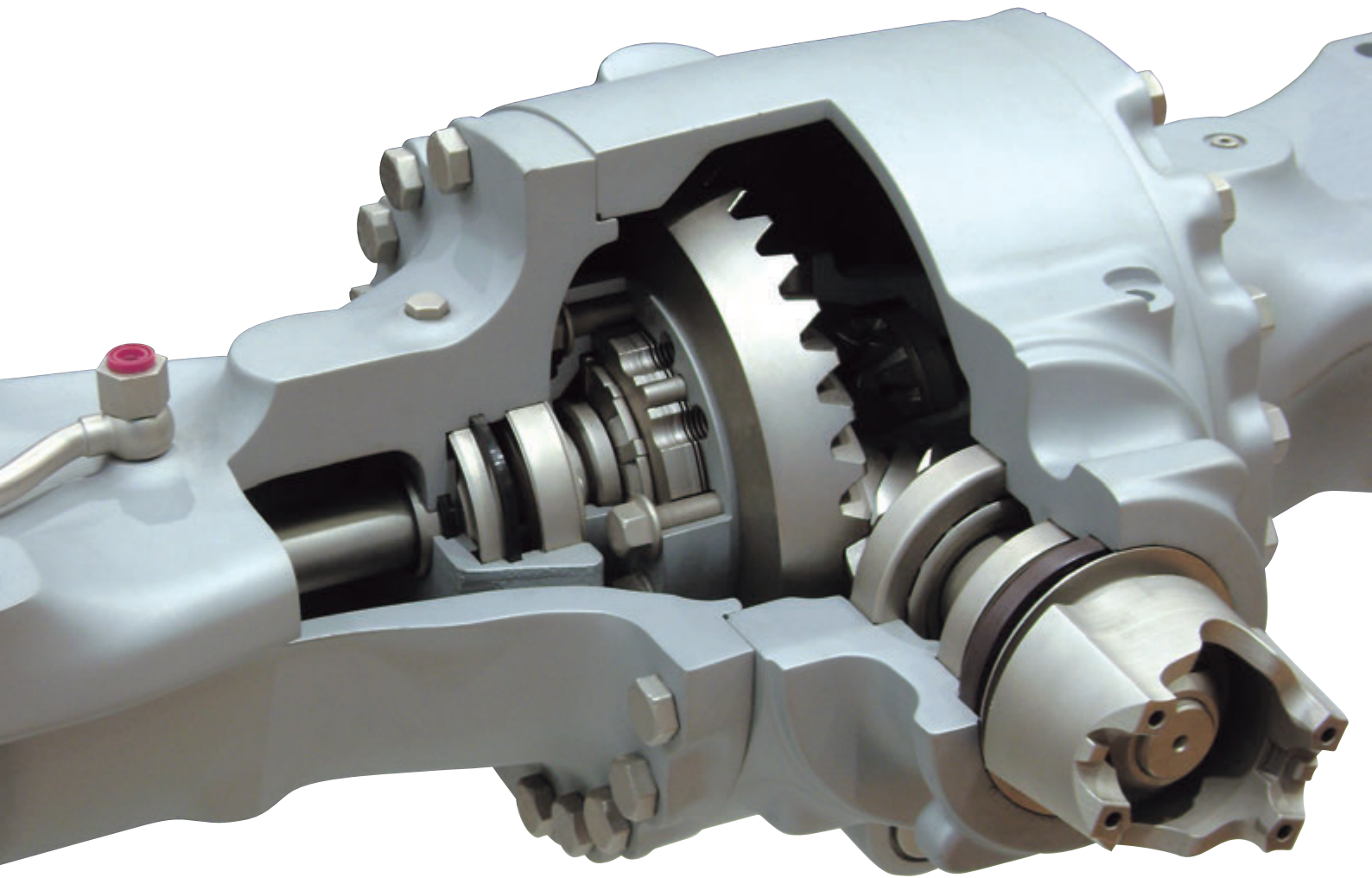
Our products lead and dominate their field in a variety of market segments.

Galaxy Bearings Ltd. welcomes the opportunity & the challenge to manufacture Custom Designed Bearings for your industry.

Our innovation is still on the way to meet new challenges.

role in **bearing industry**

Bearings for  
**Wheel & Axle**  
application



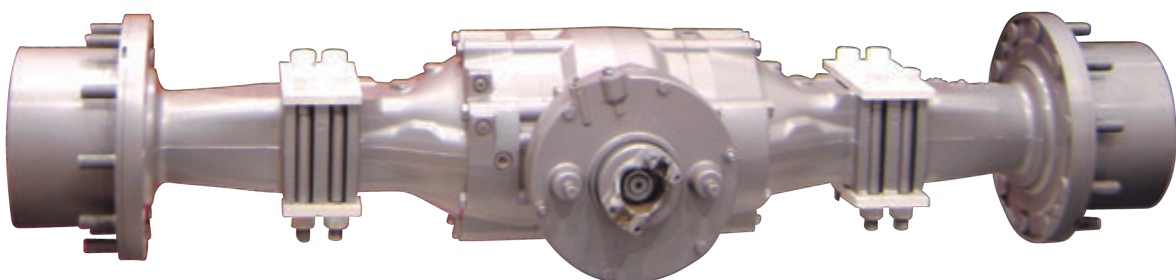


The commercial transport market is extremely competitive. Whether the operation is in India or overseas, ensuring vehicles are on the road, working is a prime focus for all areas of the industry.

Providing reliable on-road operations with comprehensive yet flexible service, now drives much of the thinking & Galaxy Bearing Ltd. have already adopted the feel to provide high precision bearing. Our bearings are very predicable which makes it an ideal host for monitoring not only its performance, but also the performance of the greater assemblies of which it is a part.

Galaxy Bearings Ltd. is specialized in manufacturing anti-friction bearings used in Wheel & axle assemblies for applications such as container trailer, equipment carrier, port trailer, bulk tank trailer, and dump trailer as well as various automotive assemblies for agriculture.

Galaxy Bearing Ltd. also manufactures axle spare parts & exports to various countries. We pay special attention in manufacturing axle & wheel bearings as they play pivotal role in functioning of axles. Our made parts have met total customer's satisfaction due to quality & cost efficiency.



Bearings for  
**Earthmoving & Crane**  
application



**extreme power**  
simplified  
**extreme load**  
nullified

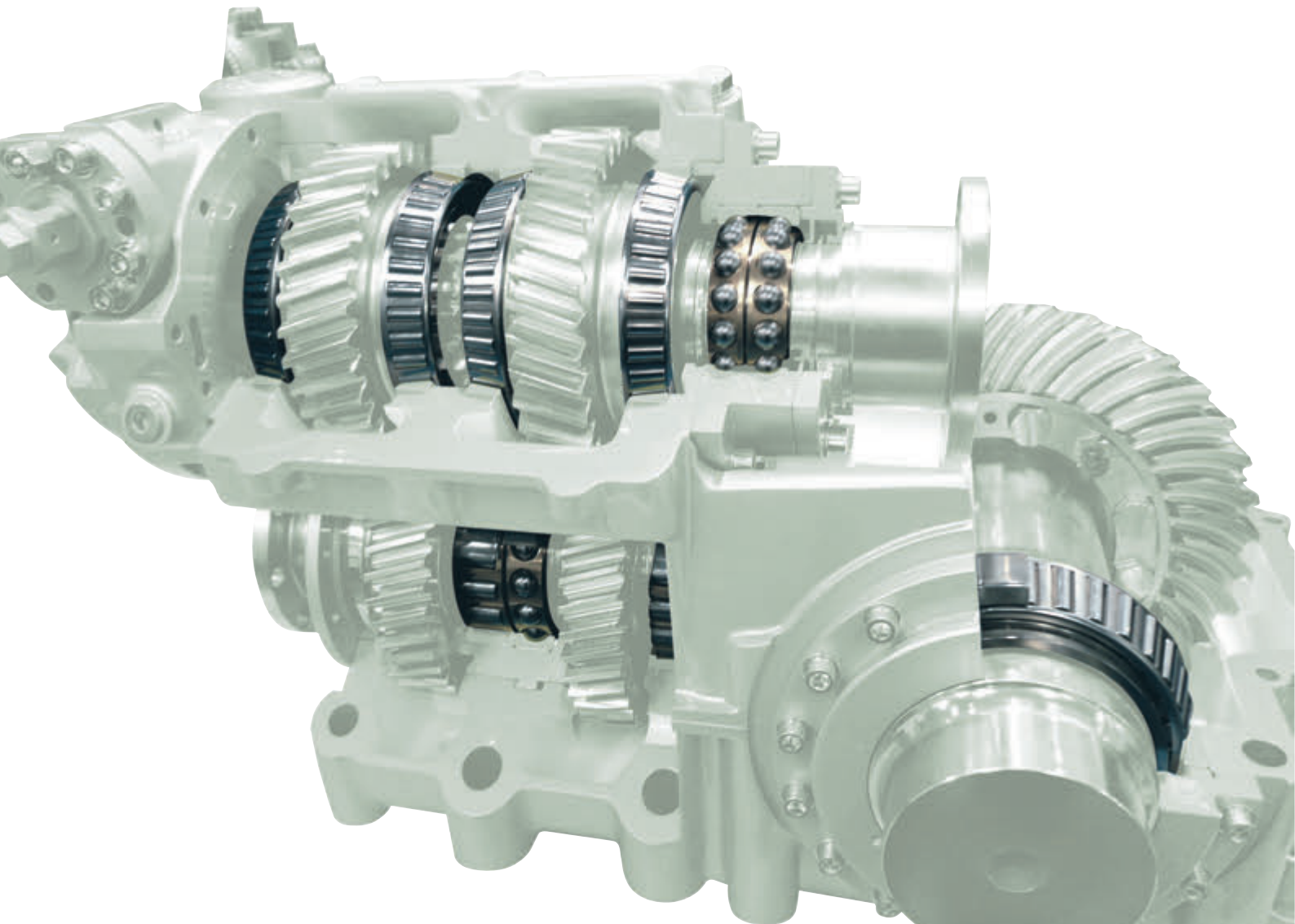
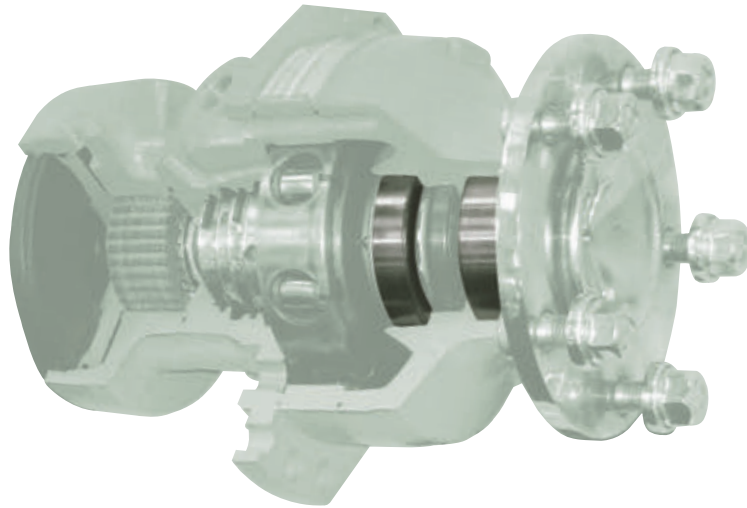
Our bearings are used in variety of Earth moving equipment such as Pick-n-Carry Cranes, Industrial Slew Cranes, Rough Terrain Slew Cranes, Boom Crawler Cranes, Articulated Boom Cranes, Forklifts Truck Loaders, Backhoe Loaders, Vibratory Compactors, Dumpers Excavators, Material Handlers, Wheel Loaders etc. which run under rugged conditions.

We offer bearings which supports, directs & minimizes the friction of motion that occurs between the machine parts. It is also the part of main machinery that supports the entire weight.

For smooth, fast and efficient working, our bearings are made as per customer's expectations to be used for varied applications such as wheel / axle, pulley and gearbox.



# Bearings for **Motor & Compressor** application

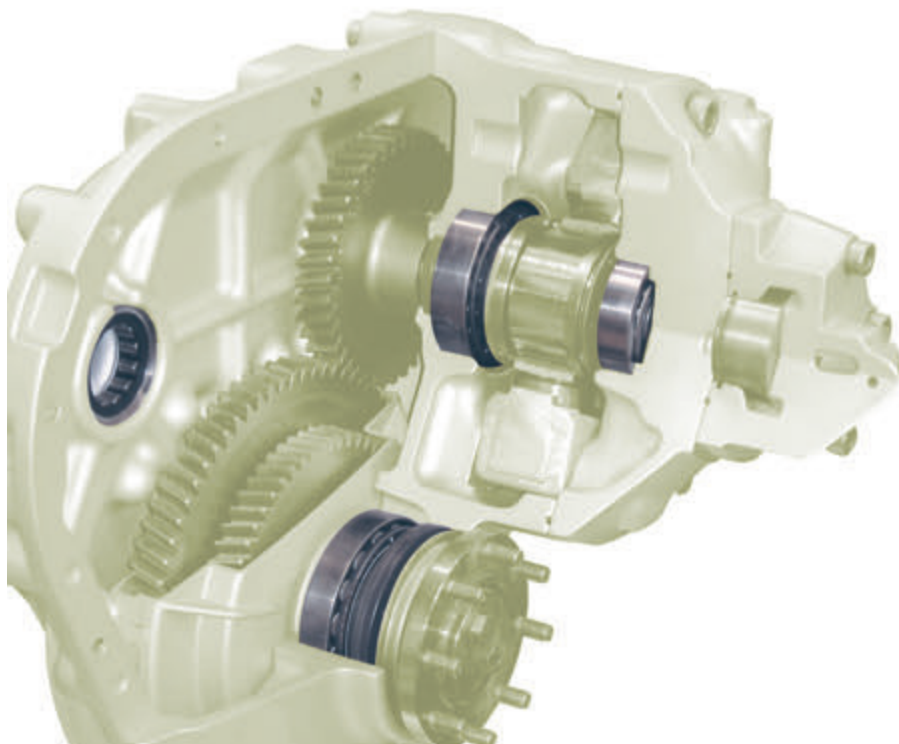




Galaxy Bearings Ltd. also leads in manufacturing bearings to the motors & compressors industry which meets individual specifications & tolerances. This sustains the performance characteristics & physical properties which are the prerequisite of these applications.

By the means of specialized tooling & engineering techniques Galaxy Bearings Ltd. can produce in mass production. Our closed cooperation since the decade have led to innovative solutions and advancements in our bearings. Thus having better performing motors & compressors today, more reliable motors & compressors for tomorrow.

We are poised to provide you with the highest quality service available in the industry with both time and cost efficiency.



# Sales & Export

**customer interface  
is now charged  
with a renewed mission**



- Global Presence **Germany • Italy • Brazil • Turkey • UAE • Russia**  
● Exported Countries

Galaxy Bearings Ltd. has three phase supply strategy.

- The company is marketing for the OEM' after market sales in the brand name "SUN".
- The Company caters to the needs of Bearing Manufactures and OEM's by supplying in their brand name.
- The company develops and supplies bearing rings to other bearing manufacturing units as well does CNC Hard-turned & ground rings.

We have been nurturing a re-defined work culture, with new values and ethos that is relevant to our fast-changing times. Our people, empowered and enhanced by skill upgradation, are demanding more of themselves in effort... walking that extra mile. To surprise our customers.



# Production Facilities

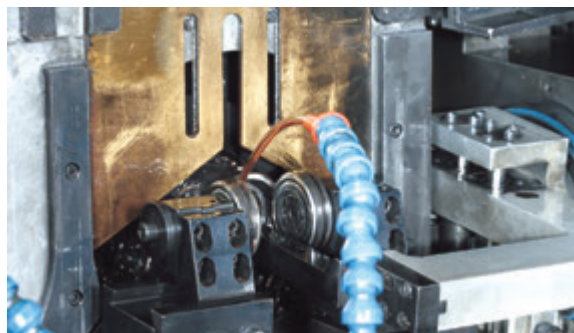


**geared for  
superior performance**



We have state of art manufacturing technology ensuring the quality of our product initiated from the raw material procurement to the final processes.

- Forging
- Spherodised annealing
- CNC turning
- Heat treatment (Through hardening)
- Grinding - SPM for bearing rings
  - Duplex grinders (Through feed)
  - Center less grinders
  - External track grinders
  - Lip grinders
  - Internal grinders
  - Super finishing
  - A complete line of imported, automized, CNC controlled grinding machine with MARPOSS in process & post process gauging
- Imported Automatic Washing & Oiling machine for assembly line
- Automatic roller shorting machine



# Quality Control



**authenticity  
inspiration  
commitment  
honesty**

Galaxy Bearings Ltd. has a required set up for ensuring desired quality. We are equipped with various testing equipment bearings...

- Noise testing instrument
- Vibration analyzer
- Digital Dial Indicator Calibrator
- Required all other gauges & instruments in metrology laboratory.
- Required Metallurgical testing equipment in metallurgical laboratory.
- Bearing Test Rigs for product validation / functional test
- Bearing Frictional Torque measurement equipment



## Product Range





# ISO/TS 16949:2009

SINGLE ROW TAPER ROLLER BEARINGS	SINGLE ROW TAPER ROLLER BEARINGS	SINGLE ROW TAPER ROLLER BEARINGS	SINGLE ROW TAPER ROLLER BEARINGS	SINGLE ROW TAPER ROLLER BEARINGS
30203	32026	33111	320 / 32 X	716649 / 716610
30204	32206	33112	3490 / 3420	801346 / 801310
30205	32207	33113	3577 / 3525	803149 / 803112
30206	32208	33114	3579 R / 3525	903249 / 903210
30207	32209	33115	3585 / 3525	3659 (Cone Assembly)
30208	32210	33116	3984 / 3920	T2ED070
30209	32211	33117	3780 / 3720	522380
30210	32212	33118	50 KW / 3720	524850
30211	32213	33205	6379 / 6320	524851A
30212	32213 UX1	33206	9049 / 9010	528983B / 528983B
30213	32214	33207	9549 / 9510	580616
30214	32215	33208	02474 / 02420	801464/805046
30215	32216	33209	09067 / 09195	639111
30216	32217	33210	11590 / 11520	SPECIAL SINGLE ROW TAPER ROLLER BEARING
30217	32218	33211	11949 / 11910	
30220	32219	33212	12649 / 12610	529084 A / 529084
30221	32220	33213	15123 / 15245	DOUBLE ROW TAPER ROLLER BEARINGS
30302	32221	33214	24780 / 24720	
30304	32222	33215	25572 / 25520	GK.02.01 (BTH 0022A)
30305	32924	33217	25577 / 25523	GK.02.02 (803194 A)
30306	32928	33220	25590 / 25520	GK.02.03 (DU 60108)
30307	32305	77213 L	25877 / 25821	GK.03.01 (BTH 0010 D)
30308	32306	331933 (L 23206 D)	28580 / 28521	GK.04.01 (BTH 0018C)
30309	32307	331257	28584 / 28521	GK.07.02 (BTH 1011)
30310	32308	524850	31594 / 31520	GK.07.03 (NP318274.904A7)
30311	32309	524851	33275 / 33462	GK.07.04 (805011 C)
30312	32310	528946 (32022 X )	37425 / 37625	GK.07.07 (201072)
30313	32311	728645	39580 / 39520	SPECIAL DOUBLE ROW TAPER ROLLER BEARINGS
30312 D	32312	332 / 344	39581 / 39520	
30313 D	32313	387 / 382	47487 / 47420 X	GK.01.01 (800792 C)
30314 D	32313 BA	389 A / 382	47890 / 47820	GK.01.02 (581079 E)
31305 (21mm)	32314 A	414 / 418	48548 / 48510	GK.01.03 (566427.H195)
31305 (25mm)	32314 BA	462 / 453	55200 C / 55437	GK.01.04 (566425.H 195)
31312 L	32315	482 / 472	67048 / 67010	GK.01.05 (566426.H 195)
32008	32316	529 X / 522	67390 / 67322	GK.01.06 (803750 B)
32010 X	33010	535 / 532 A	72212 / 72487	GK.03.03 (804162A)
32011 X	33012	539 / 532 X	204043 / 204010	GK.05.01 (803904)
32012 XU	33013	565 / 562	218248 / 218210	GK.05.02 (805415A)
32013	33014 M	566 / 563	220149 / 220110	GK.05.05 (800525C)
32014	33015	575 / 572	415647 / 415610	GK.05.06 (566847.H195)
32015	33018	580 / 572	501349 / 501310	GK.05.07 (808918)
32016 X	33019	593 / 592 A	518445 / 518410	GK.05.08 (569868.H195)
32017	33020	594 / 592 A	528946	GK.05.09 (570530.H195)
32018	33021	598 A / 592 A	522649 / 522610	GK.08.01 (805923)
32019	33022	663 / 653	534565 / 528983	GK.08.02 (566074.H195)
32020	33024	683 / 672	603049 / 603011	GK.08.03 (566834.H195)
32022 X	33109	1988 / 1922	715334 / 715311	GK.08.05 (566193.H195)
32024	33110	2789 / 2729	715343 / 715311	GK.08.06 (566283.H195)

# ISO/TS 16949:2009

SINGLE ROW CYLINDRICAL ROLLER BEARINGS
CFM 10 BR
N 313
NJ 212 EC
NJ 2210
NJ 305
NJ 309
NS 1909 L
NS 1911
NU 209 N
NU 2209 MN
NU 307 N
NU 307 MN
NU 309 N
NU 309 MN
NUP 12097 N
NUP 224
NUP 309 N
NUP 314 EMI C 3
NUP 315
RNU 228
RNU 2205
SP 002
191584
512533
N 214
SPECIAL SINGLE ROW CYLINDRICAL ROLLER BEARING
524213
DOUBLE ROW CYLINDRICAL ROLLER BEARING
LO 64 BR
FULL COMPLIMENT CYLINDRICAL ROLLER BEARINGS
JC 8002
JC 8003
JC 8017
JC 8018
JC 8019

SINGLE ROW BALL BEARINGS
6010 ZZ
6013
6205
6207
6207 W.O.S.
6207 2RS
6208
6208 W.O.S.
6210
6211
6211 W.O.S.
6212
6213
6215
6304
6305
6306
6307
6308
6308 N
6310 N
JB 1003
MSN 14
88511 W.O.S.
88509 W.O.S.
CLUTCH RELEASE BEARINGS
6013 CLUTCH
1888180
1888180 WITH HUB
1888451
306445 C
306445 C WITH HUB
DX 33 for GB 50
DX 34 for GB 60
J 12

DOUBLE ROW NEEDLE ROLLER BEARINGS
80005
80006
THRUST TAPER ROLLER BEARINGS
T 138 / 0 / TR
T 144 / TR
T 151 / 0 / TR
SPHERICAL ROLLER BEARING
509043
FOUR POINT SINGLE ROW BALL BEARING
QJ 309
SINGLE ROW NEEDLE ROLLER BEARINGS
284424
424727
NW 7050
WA 2028 (BR)
SPECIAL BALL BEARING
524599
529257A





## Notes

This image shows a single sheet of white paper with horizontal ruling lines. The lines are evenly spaced and run across the width of the page. There are no margins, text, or other markings on the paper.

# Group Clientele & Plant Locations



Tata Motors Ltd.



Mahindra & Mahindra Co. Ltd.  
(Mumbai, Nagpur, Igatpuri, Zaheerabad)



Maruti Suzuki Motors Ltd.



Simpson & Co. Ltd.



TATA CUMMINS INDIA LTD.



CUMMINS INDIA LTD.



SAME DEUTZ-FAHR INDIA (P) LTD.



Tecumseh Products  
(India) Ltd.



NEW HOLLAND  
New Holland Tractors (India) Pvt. Ltd.

**VOLVO EICHER**

Volvo Eicher  
Commercial Vehicles Ltd.



Tafe Motors &  
Tactors Ltd.



JOHN DEERE  
John Deere Equipment  
Private Limited



Ashok Leyland  
Ashok Leyland



International  
Tractors



LOMBARDINI  
Lombardini India Private Limited



Swaraj Engines Ltd.



Ingersoll Rand India Limited



ELGI Engine Division



Greaves Limited  
(Light Engine Unit)



ESCORTS  
Escorts Ltd.



Kirloskar Oil Engines Ltd.



ANG Auto Ltd.



International Auto Ltd.



Machine Tool Prototype  
Factory



Vehicle Factory  
Jabalpur



Virgo Engineers Ltd.



PREMIER LTD.



EICHER  
Eicher Motors



Escort Constructional  
Equipments Ltd.



Ace Constructional  
Equipments Ltd.



Tratec Engineers  
Pvt. Ltd.



Indo Farm  
Tractors



Standard Corporation  
Pvt. Ltd.



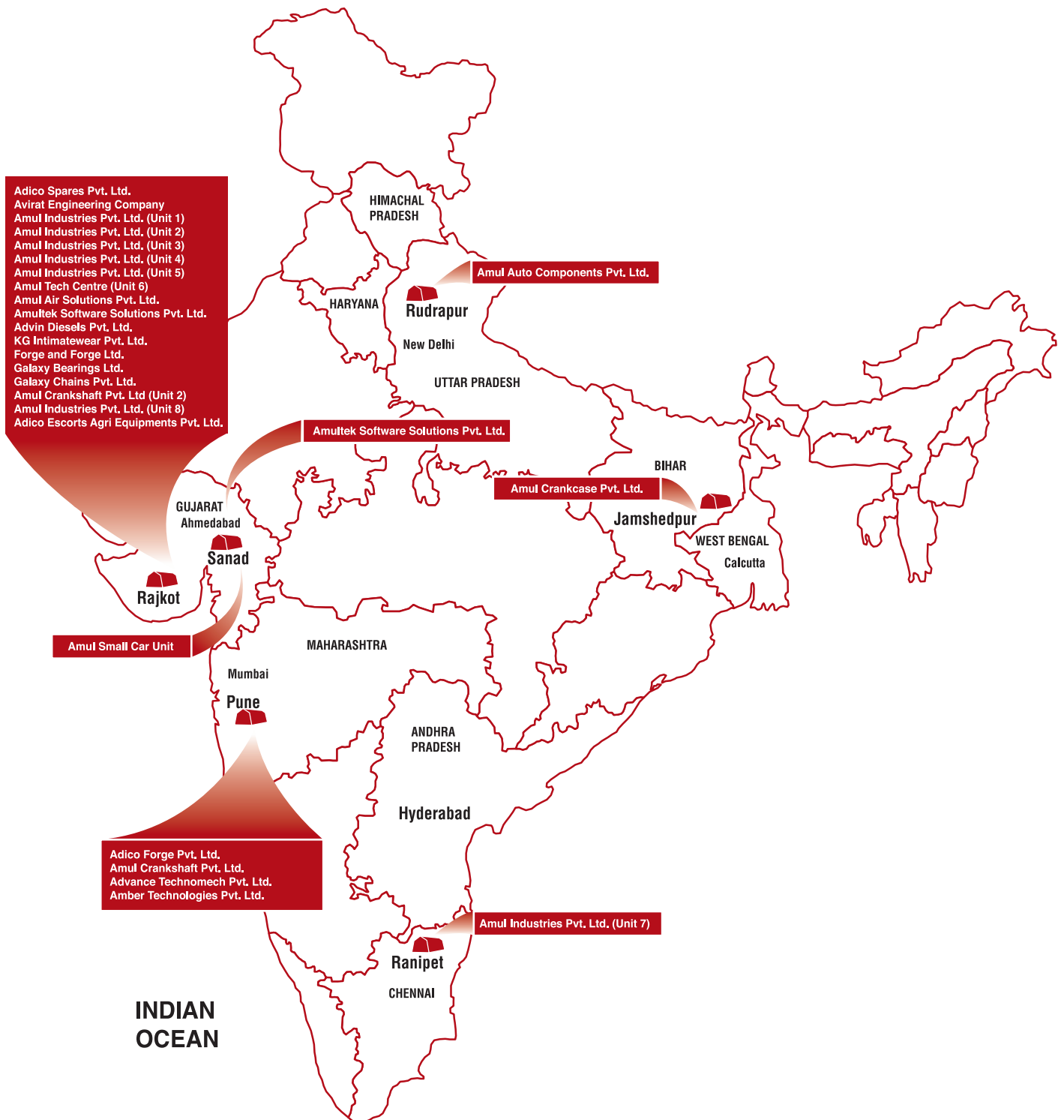
Automotive Axles Limited



LARSEN & TOUBRO  
It's all about Imagineering

Logo, brands & product names shown above are trademarks or registered trademarks which are the property of their respective owners/holders/companies.  
All rights are reserved to their respective owners/holders/companies.





# Group Companies

1965



**Adico Spares Pvt. Ltd.**  
ISO 9001 Company



Trading in Light Engineering Goods



**Forge & Forge Pvt. Ltd.**  
ISO 9001:2000 Company



Manufacturing Forgings

1974



**Advin Diesels Pvt. Ltd.**

Manufacturing Single & Double  
Stationary Diesel Engines



Lister & Petter Type Engines for  
Local Market

1982



**ADICO INTERNATIONAL**  
International business  
Engines & Engine Components  
ISO 9001:2008



**Amul Unit - 1 (Rajkot)**  
**Corporate Office**  
ISO/TS 16949:2002 Company



Manufacturing Connecting Rods,  
Crankshafts, Compressor Components  
& Automotive Engine Components

1988



Manufacturing Anti-Friction Bearings,  
Ring Forgings & Green Rings



**Galaxy Chains Pvt. Ltd.**  
ISO 9002 Company



Manufacturing Industrial  
Transmission Chains & Conveyors

1990

2000



**Amul Unit - 2 (Rajkot)**  
ISO 9001:2000 Company

For Compressors



Dedicated unit for Connection Rods  
& Compressor Crankshafts

2002



**Advance Technomech Pvt. Ltd.**  
(Pune)



Manufacturing & Refurbishing  
Machines, Also designs Jigs  
& Fixtures

2004



**Amul Unit - 4 (Rajkot)**  
ISO/TS 16949:2002 Company



State-of-the-art CNC line of  
Connecting Rods for Light Utility Vehicles



**Avico Exim Pvt. Ltd. (Pune)**  
ISO 9001:2000 Company  
Manufacturing Gears & Castings



## Non-Engineering Companies

- Amultek Software Solutions • K G Intimatewears • Galaxy School Systems • Modern Construction Co.
- Galaxy Distribution

2005



**Adico Forge Pvt. Ltd.** (Pune)  
ISO 9001:2000 Company



**Royale Touche Aluminium Extrusions Pvt. Ltd.**  
ISO 9001:2000 Company  
Manufacturing ALUMINIUM EXTRUSIONS  
with an installed capacity  
of 500MT/month



**Amber Technologies**  
(Pune)

Manufacturing various types  
of Drills, Honning Machines  
and SPMS.

2006



**Amul Unit - 5** (Rajkot)  
ISO 9001:2000 Company

Compressor  
Assembly Division



2007



**Amul Auto Components Pvt. Ltd.**  
(Rudrapur)  
Applied for ISO certification

Manufacturing Crankshafts  
& Connecting Rods



**Amul Crankcase Pvt. Ltd.**  
(Jamshedpur)  
Applied for ISO certification



**Diesel Engine Plant**  
Metoda (Rajkot)



2008



**Amul Unit - 6**  
(Rajkot)  
Tech Center for  
Reserch and Development



**Amul Unit - 7**  
(Ranipet)

Manufacturing  
Crank Case



2009



**Amul Small Car Unit** (Sanad)



**Amul Air Solutions Pvt. Ltd.**  
(Rajkot)  
Manufacturing Crankshafts for  
Refrigeration Compressors



**Amul Crankshaft Pvt. Ltd.** (Rajkot)  
Applied for ISO certification



Dedicated Unit for  
Manufacturing Crankshafts

2011



**Amul Unit - 8**  
(Rajkot)

Manufacturing  
Connecting Rods



**Amul Unit - 3**  
(Rajkot)



Dedicated unit  
for Crankshafts

2012

**ATS**  
Akshar Tooling Solution

Akshar Tooling Solution

2013



**Amul Ranipet Unit 9**  
(Rajkot)



**Adico Escorts  
Agri Equipments Pvt. Ltd.**  
(Rajkot)



# **GALAXY**

## **Galaxy Bearings Limited**

An ISO/TS 16949:2009 Company

Survey no. 253, National Highway no. 27,  
Village : Shapar, Dist : Rajkot - 360024.  
Gujarat, India

Phone : +91 - 2827 - 252401 / 02

Fax : +91 - 2827 - 252400

Email : [info@galaxybearings.com](mailto:info@galaxybearings.com)

[www.galaxybearings.com](http://www.galaxybearings.com)

